



# Summary of our Attendance Management Plan

In line with the government's target of 80% of students regularly attending school by 2030.

We're currently at

**53%** ▼ of **70%**

Regular attendance<sup>1</sup>  
Term 4, 2025

Our school has a target

Regular attendance  
by Term 4, 2026

With targets of 75% in 2027 and 80% in 2028

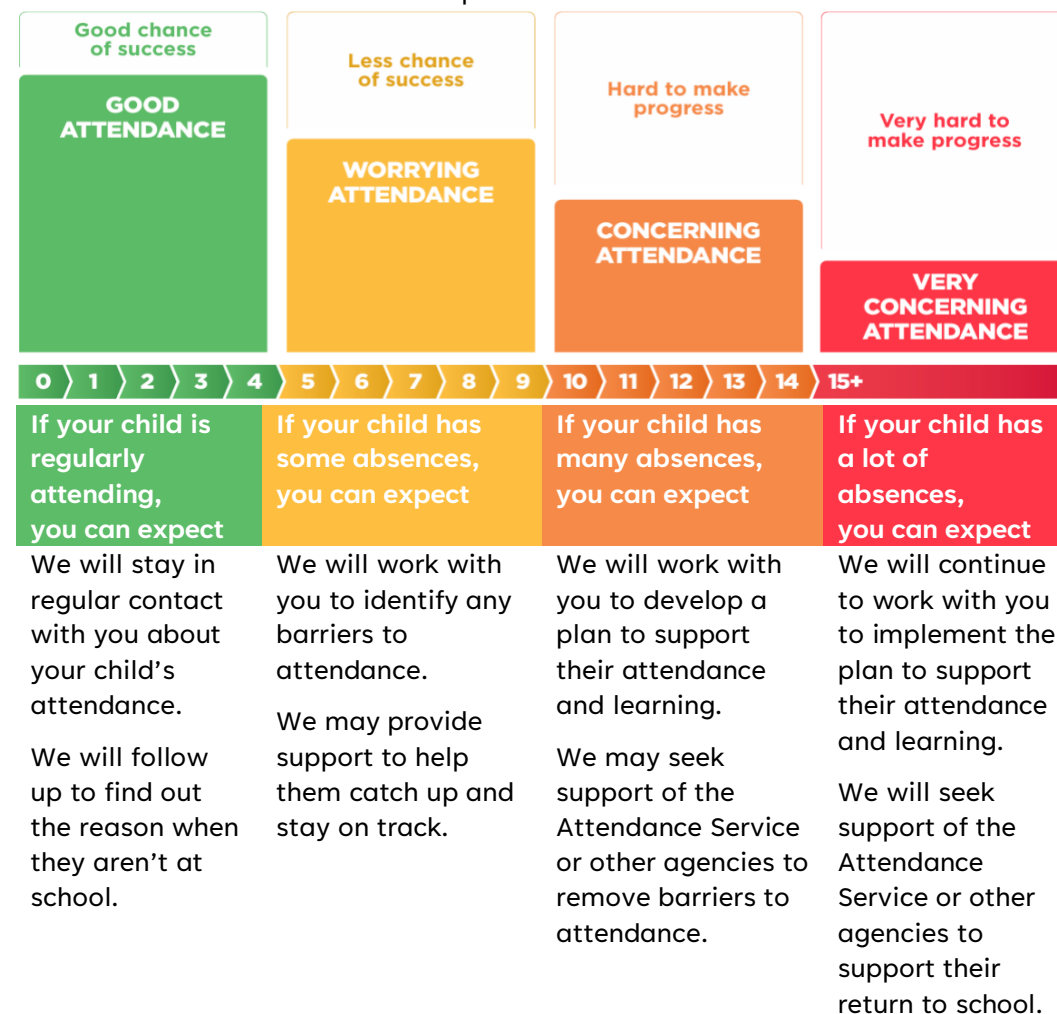
Our **Attendance Management Plan** sets out

- Why attendance is a priority for our school
- Legal requirements about attendance
- Our expectations of students, parents and our school staff

This includes

- How we manage attendance in our school
- How we identify concerning attendance
- How we respond to absences at different thresholds
- How we monitor and review the impact of our actions
- How we give the Board assurance that the school is managing attendance effectively

Our school uses the **Stepped Attendance Response (STAR)** to guide when and how we respond to absences.



<sup>1</sup> "Regular attendance" means attending more than 90% of a term, or 9 days in a fortnight